

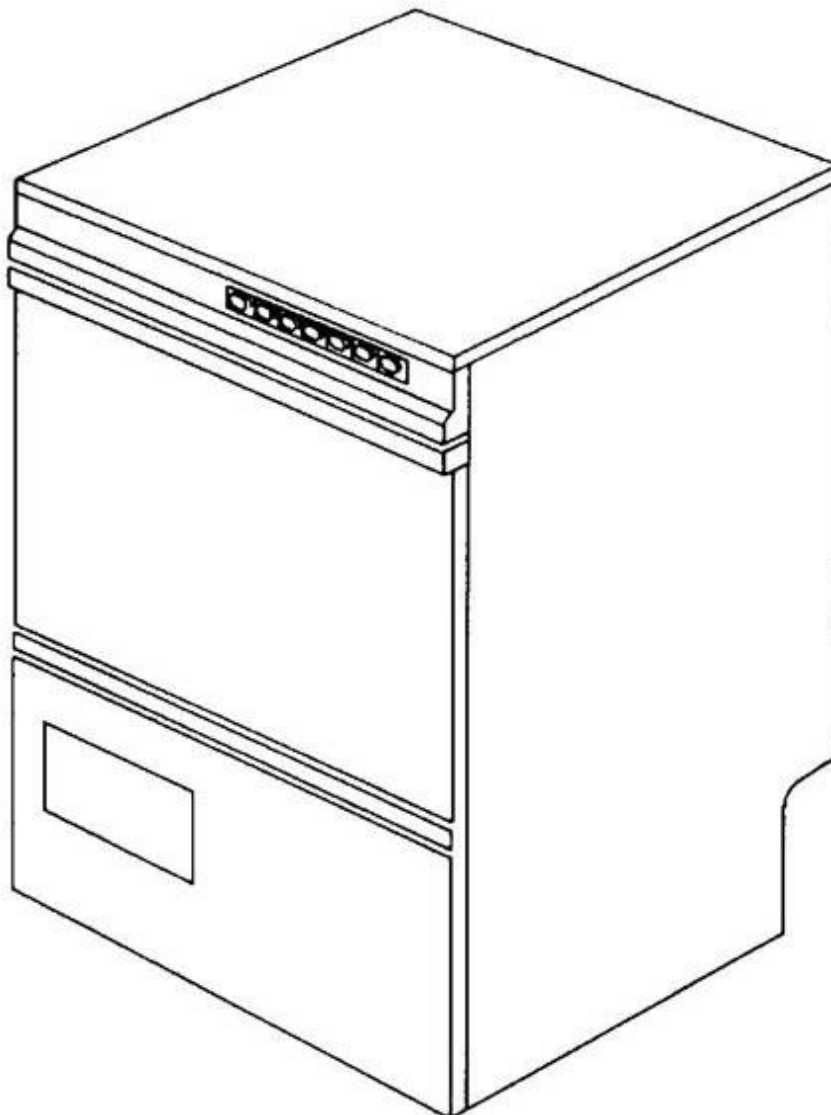
winterhalter

Spare Parts List GS 12

Edited: 12/90

Revised: 02/08

Part no.: 89001376



Summary

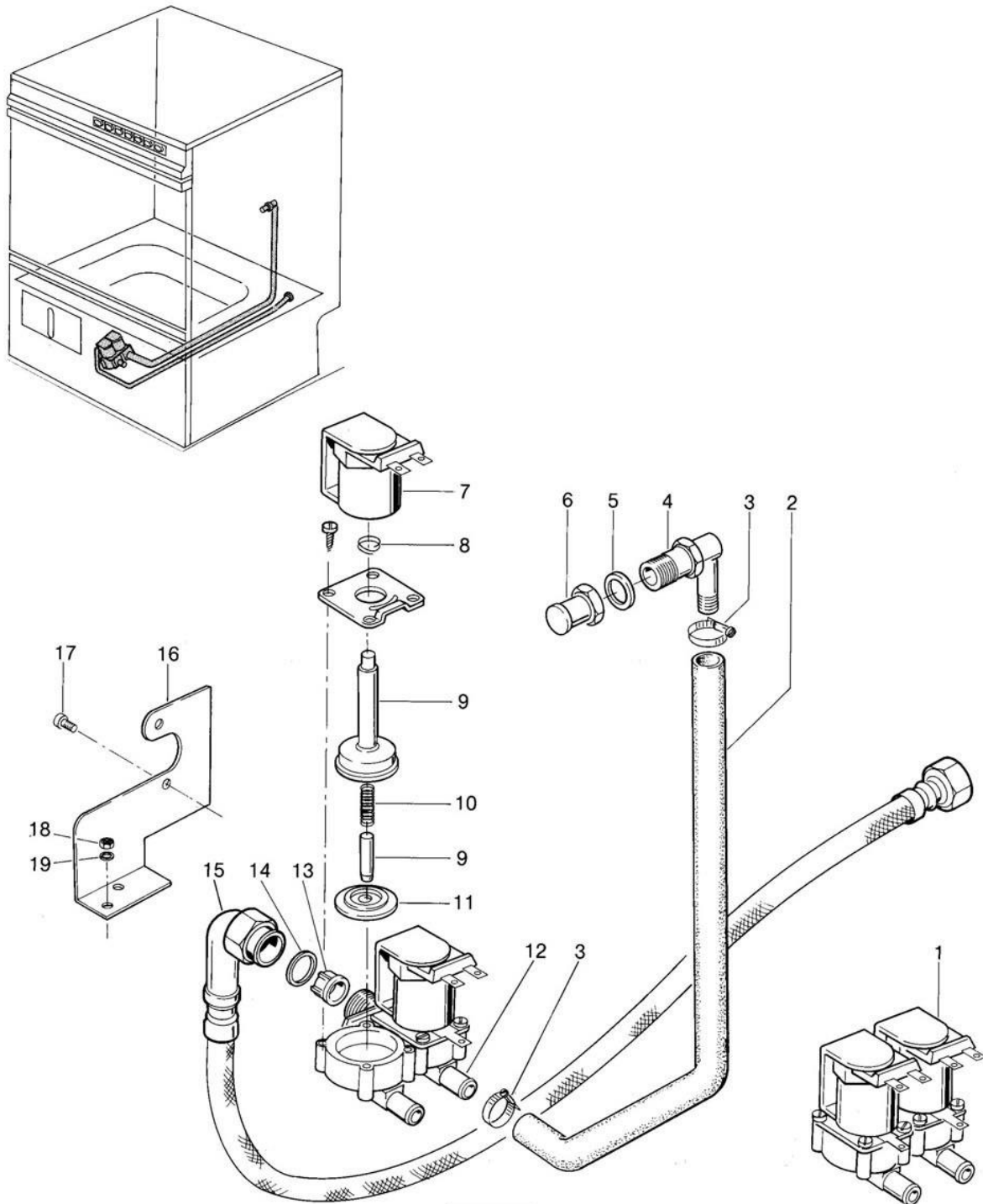
| | |
|--|----------------|
| Water supply and inlet | Page 1 and 2 |
| Water drain, tank heating and Mediamat | Page 3 and 4 |
| Wash system I | Page 5 and 6 |
| Wash system II | Page 7 and 8 |
| Rinsing I | Page 9 and 10 |
| Rinsing II | Page 11 and 12 |
| Door | Page 13 and 14 |
| Panel and filter | Page 15 and 16 |
| Electrical parts I | Page 17 and 18 |
| Electrical parts II | Page 19 and 20 |

Parts that have the note " Part made to order only!", are not in stock. This parts are made specially for your order and have a delivery time. They are not returnable.

Racks and accessories see separate list.

GS 12

Wasserzulauf und Wassereinlauf Water supply and inlet Alimentation et arrivée d'eau



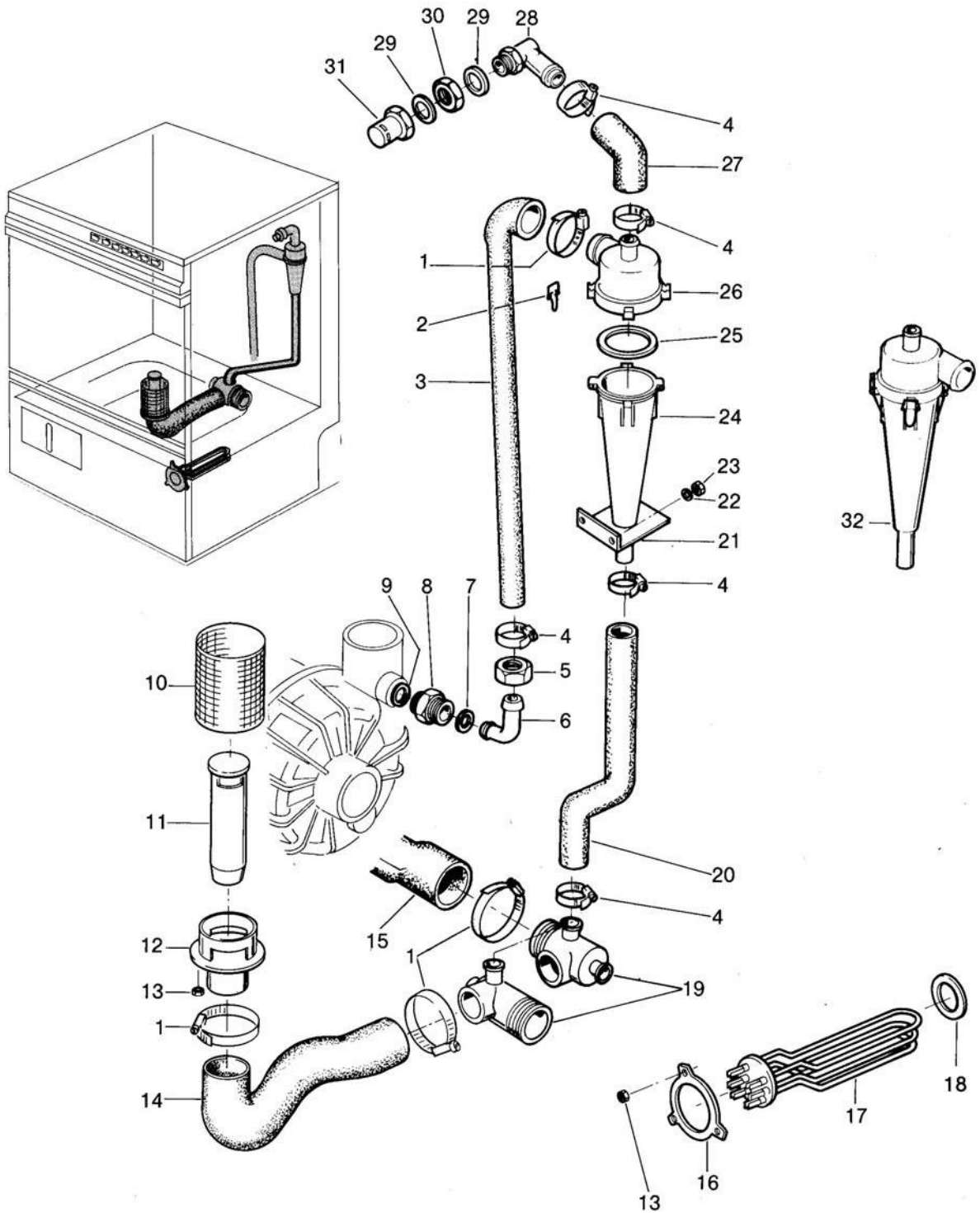
GS 12

Water supply and inlet

| Pos. | Designation | Part No. | Notes |
|------|--|-----------|-----------------------|
| 1 | Double solenoid valve | 31 06 182 | |
| 2 | Tank inlet hose | 40 03 047 | |
| 3 | Hose clip 14-22 \emptyset | 28 02 301 | |
| 4 | Connection 1/2" BSP x \emptyset 14,5 | 5531007 | Consist of Pos. 4,5,6 |
| 5 | Seal \emptyset 28 x \emptyset 21 x 2,0 | 27 09 011 | |
| 6 | Water inlet 1/2" BSP | 5531007 | Consist of Pos. 4,5,6 |
| 7 | Coil 220-240 V / 50-60 Hz | | Replaced by Pos.1 |
| 8 | Spring for solenoid valve | | |
| 9 | Plunger with bush | | |
| 10 | Spring | | |
| 11 | Diaphragm | | |
| 12 | For solenoid valve bottom part | | |
| 13 | Dirt sieve for solenoid valve | 31 06 118 | Red |
| 14 | Seal \emptyset 24 x \emptyset 17 x 2 | 27 09 009 | |
| 15 | Metal hose | 2901316 | |
| 16 | Solenoid valve support | 55 02 013 | |
| 17 | Pan head screw M 4 x 8 | 20 10 210 | |
| 18 | Hexagon nut M 5 | 21 01 303 | |
| 19 | Spring washer B 5 | 23 03 302 | |
| n.p. | Return valve 1/2" BSP | 29 03 230 | until 12/87 |
| | | | |
| | | | |
| | | | |
| | | | |
| | | | |

GS 12

Wasserablauf, Tankheizung und Mediamat Water drain, tank heating and Mediamat Ecoulement d'eau de la chauffage et Médiamat



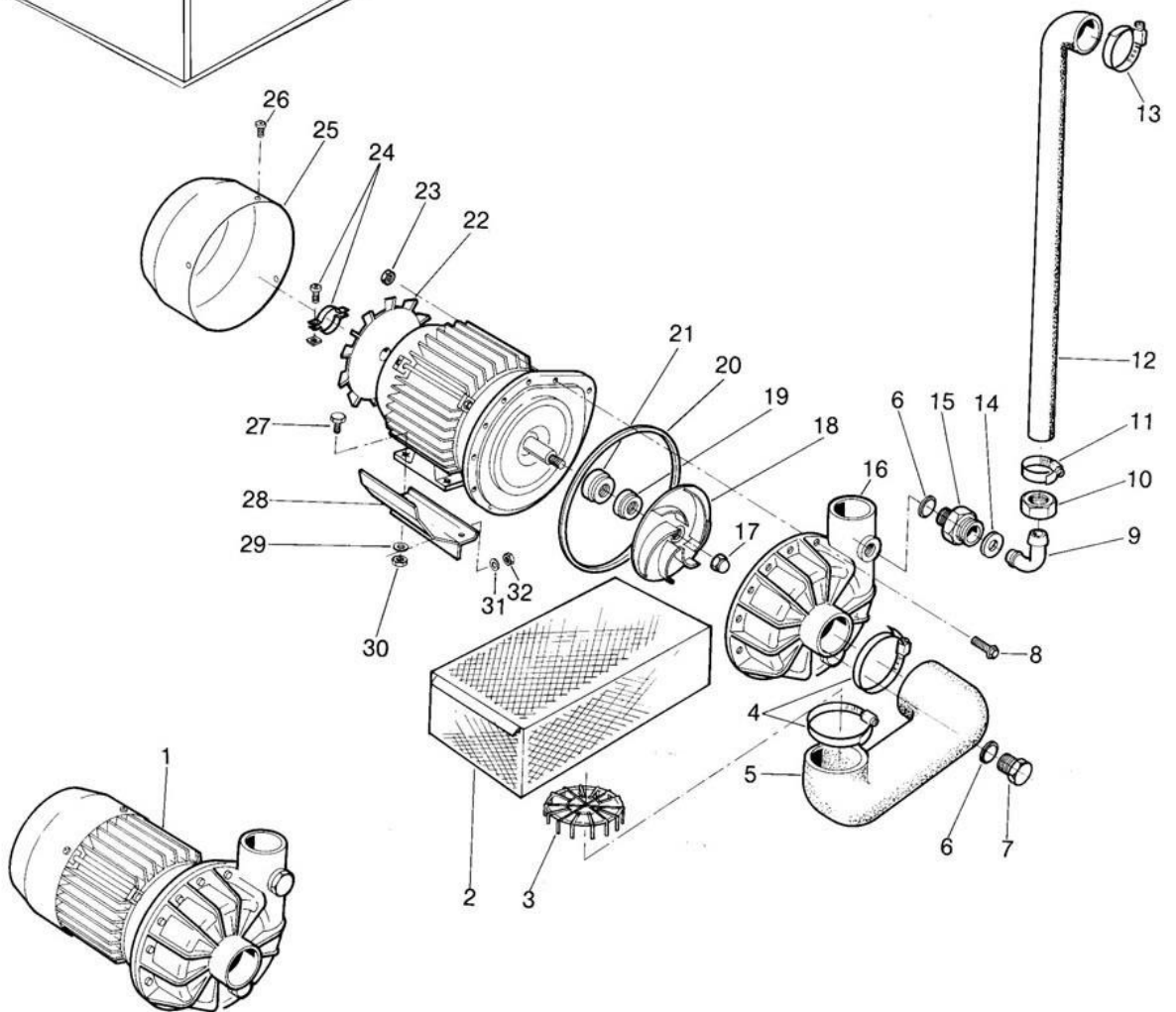
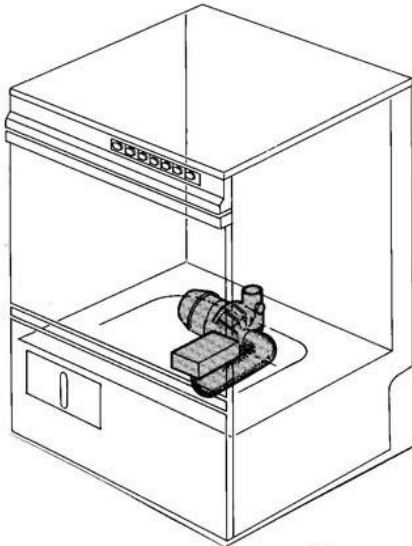
GS 12

Water drain, tank heating and Mediamat

| Pos. | Designation | Part No. | Notes |
|------|---|-----------|--------------------------|
| 1 | Hose clip \varnothing 32 - \varnothing 52 | 28 02 309 | |
| 2 | End piece locking | 28 04 041 | |
| 3 | Reducing hose \varnothing 30 x \varnothing 16 x 470 | 40 03 036 | Cut to fit |
| 4 | Hose clip \varnothing 20 - \varnothing 30 | 28 02 109 | |
| 5 | Coupling nut BSP 3/4" x 21 | 29 07 203 | |
| 6 | Mediamat connection elbow | 29 06 524 | |
| 7 | Seal \varnothing 24 x \varnothing 19,5 x 1,5 | 27 09 010 | |
| 8 | Mediamat conn. nipple 1/2" x 3/4" BSP x 32 | 30 11 502 | |
| 9 | O-ring 3,5 x \varnothing 20 | 27 07 040 | |
| 10 | Stand pipe filter; 185 mm | 29 04 229 | adapt |
| n.p. | Stand pipe | 61004192 | 185 mm overflow height |
| 12 | Waste outlet connection cpl. | 55 28 559 | |
| 13 | Hexagon nut M 5 | 21 01 303 | |
| 14 | Siphon | 40 03 040 | |
| 15 | Drain hose | 40 03 044 | only for drain to left |
| 16 | Clamping plate | 01 17 003 | |
| 17 | Heating element 3 kW 220/380 V | 31 03 027 | |
| n.p. | Heating element 3 kW 240/420 V | 31 03 029 | |
| 18 | O-ring 5,7 x \varnothing 47,2 | 27 07 069 | |
| 19 | Mediamat drain | 35 01 080 | |
| 20 | Mediamat hose | 40 03 041 | |
| 21 | Supporting angle bracket | 55 04 037 | |
| 22 | Washer \varnothing 4,3 | 22 02 202 | |
| 23 | Hexagon nut M 4 | 21 01 302 | |
| 24 | Accelerator | 35 01 035 | |
| 25 | O-ring \varnothing 51 x 3 | 27 07 043 | |
| 26 | Head piece inlet | 35 01 124 | |
| 27 | Hose elbow | 40 03 045 | |
| 28 | Mediamat connection | 35 01 155 | |
| 29 | Seal \varnothing 28 x \varnothing 21 x 2,0 | 55 31 001 | Consist of Pos. 29,30,31 |
| 30 | Hexagon nut BSP 1/2" | 30 09 212 | |
| 31 | Water inlet BSP 1/2" x \varnothing 26 x 34 | 55 31 001 | Consist of Pos. 29,30,31 |
| 32 | Mediamat connection unit cpl. | 55 27 040 | |
| | | | |
| | | | |

GS 12

Waschsystem I Wash system I Système de lavage I



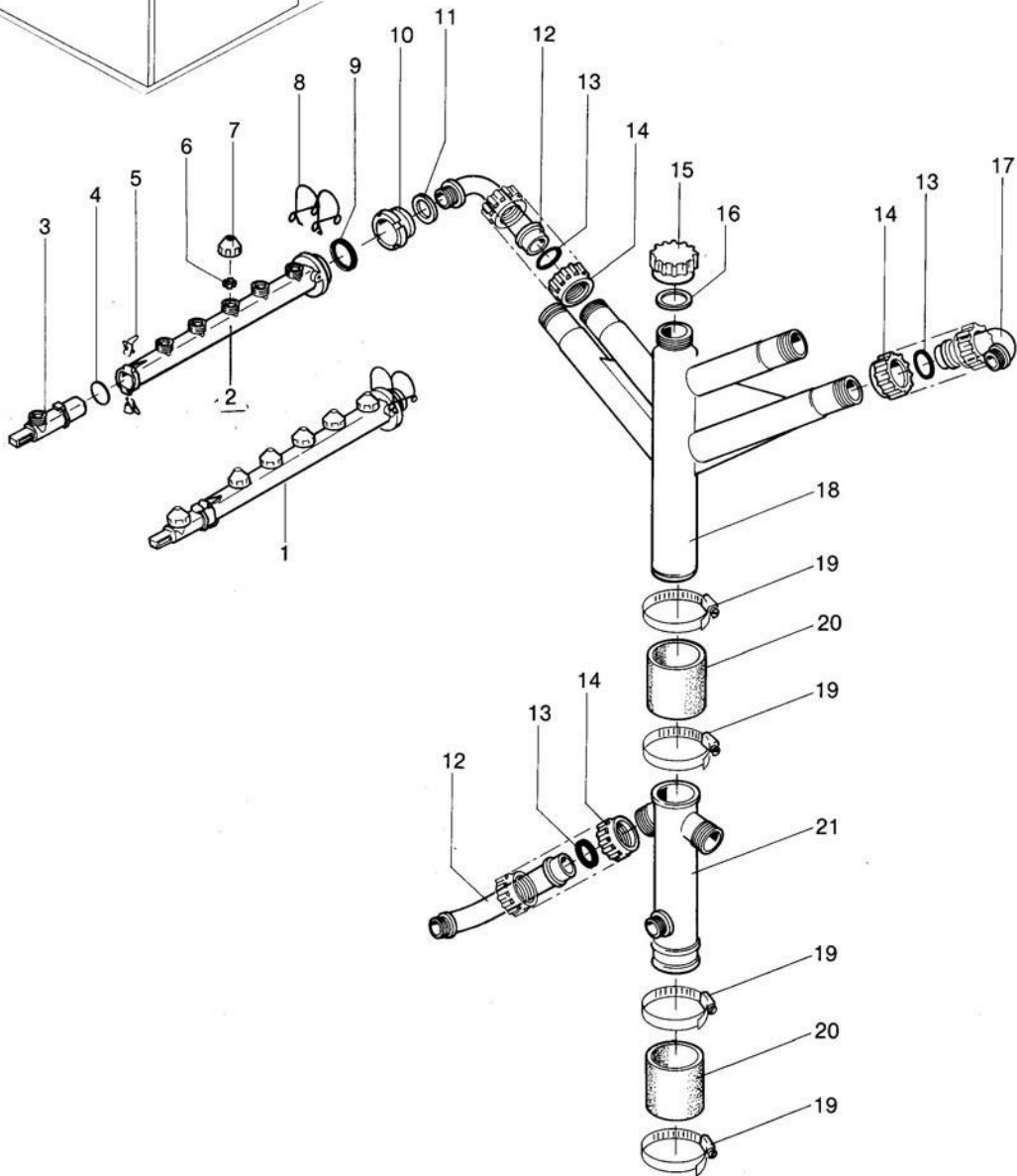
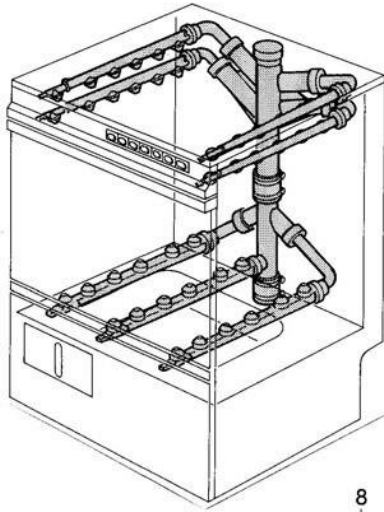
GS 12

Wash system I

| Pos. | Designation | Part No. | Notes |
|------|---|-----------|----------------------------|
| 1 | Pump cpl. 230/400 50 Hz 1,1 kW | 31 02 263 | |
| n.p. | Pump cpl. 220/380 V 60 Hz 1,1 kW | 31 02 267 | |
| n.p. | Pump cpl. 230 V 50 Hz 1,1 kW | 31 02 265 | |
| 2 | Pump filter cpl. | 55 13 027 | |
| 3 | Suction filter | 55 13 112 | |
| 4 | Hose clip \varnothing 62 - \varnothing 82 | 28 02 120 | |
| 5 | Hose elbow | 40 03 042 | |
| 6 | O-ring 3,5 x \varnothing 20 | 27 07 040 | |
| 7 | Blind plug BSP 1/2" x 20,5 | 35 01 108 | |
| 8 | Hexagon bolt M 4 x 22 | 20 01 020 | |
| 9 | Mediamat connection elbow | 29 06 524 | |
| 10 | Coupling nut BSP 3/4" x 21 | 29 07 203 | |
| 11 | Hose clip \varnothing 20 - \varnothing 30 | 28 02 109 | |
| 12 | Reducing hose \varnothing 30 x \varnothing 16 x 345 | 60001699 | |
| 13 | Hose clip \varnothing 32 - \varnothing 52 | 28 02 110 | |
| 14 | Seal \varnothing 24 x \varnothing 19,5 x 1,5 | 27 09 010 | |
| 15 | Mediamat conn. nipple 1/2" BSP x 3/4" x 32 | 30 11 502 | |
| 16 | Pump housing | 31 02 204 | |
| 17 | Dome head nut M 8 | 21 10 305 | self-securing |
| 18 | Impeller \varnothing 124 for 1,7 kW pump | 31 02 207 | |
| n.p. | Impeller \varnothing 109 50 Hz for 1,1 kW pump | 31 02 273 | |
| n.p. | Impeller \varnothing 96 60 Hz for 1,1 kW pump | 31 02 274 | |
| 19 | Seating ring | 80 002670 | Consist of Pos. 19,20,21 |
| 20 | O-ring \varnothing 158 x 3,5 | 31 02 209 | |
| 21 | Motor shaft seal | 80 002670 | Consist of Pos. 19, 20, 21 |
| 22 | Fan wheel | 31 02 211 | Incl. Pos.24 |
| 23 | Hexagon nut M 4 | 21 01 302 | |
| 24 | Fixing clip cpl. | 31 02 218 | with screw and nut |
| 25 | Fan hood | 31 02 212 | |
| 26 | Lens head screw M 4 x 8 | 20 10 310 | |
| 27 | Hexagon bolt M 8 x 20 | 20 01 312 | |
| 28 | Pump angle cpl. | 60000907 | |
| 29 | Spring washer B 8 | 23 03 301 | |
| 30 | Hexagon nut M 8 | 21 01 305 | |
| 31 | Washer \varnothing 6,4 | 22 01 302 | |
| 32 | Hexagon nut M 6 | 21 01 304 | |

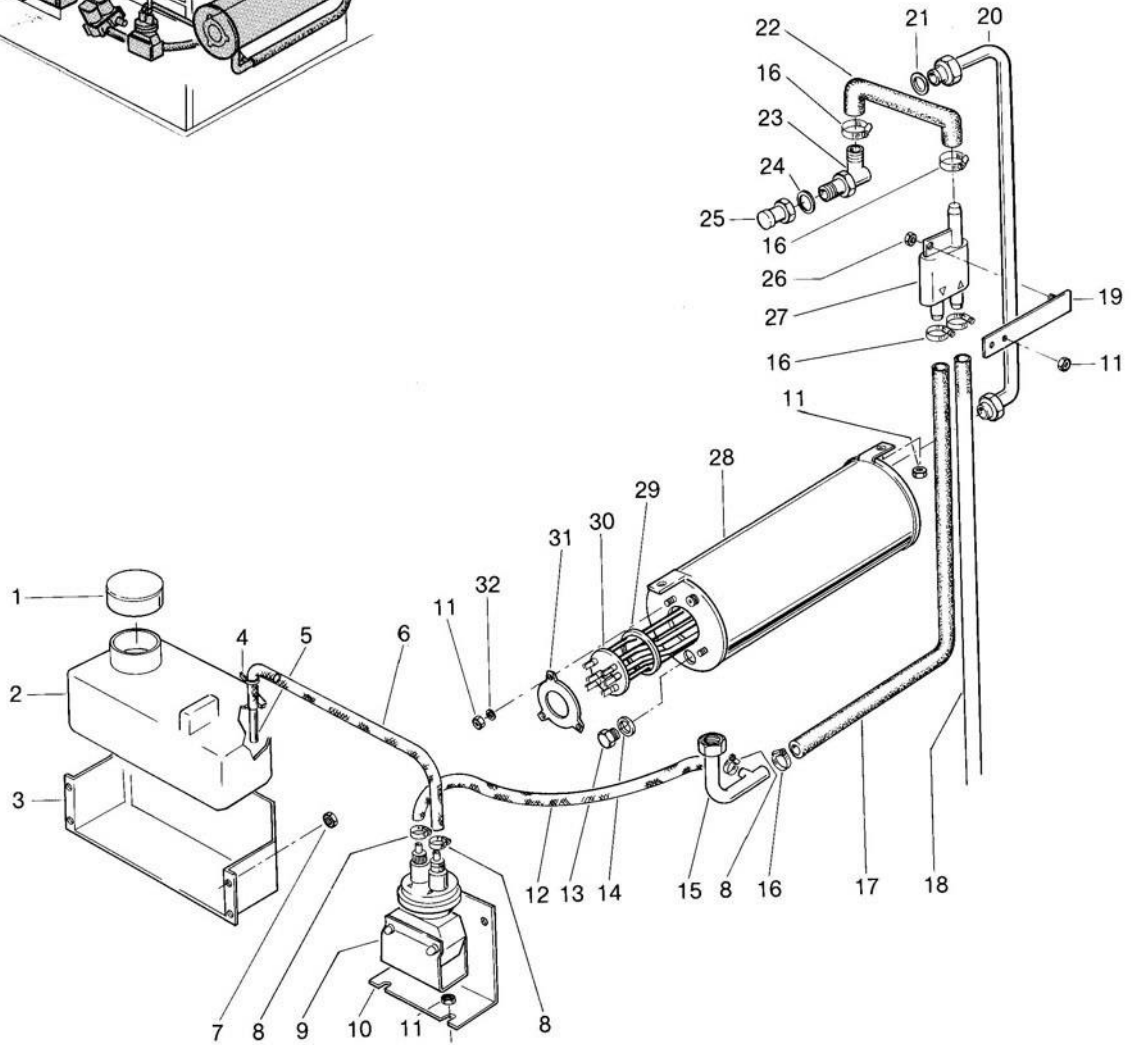
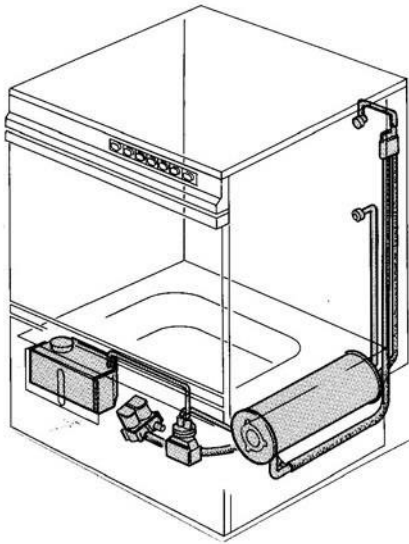
GS 12

Waschsystem II Wash system II Système de lavage II



GS 12

Nachspülung I Rinsing I Rinçage I

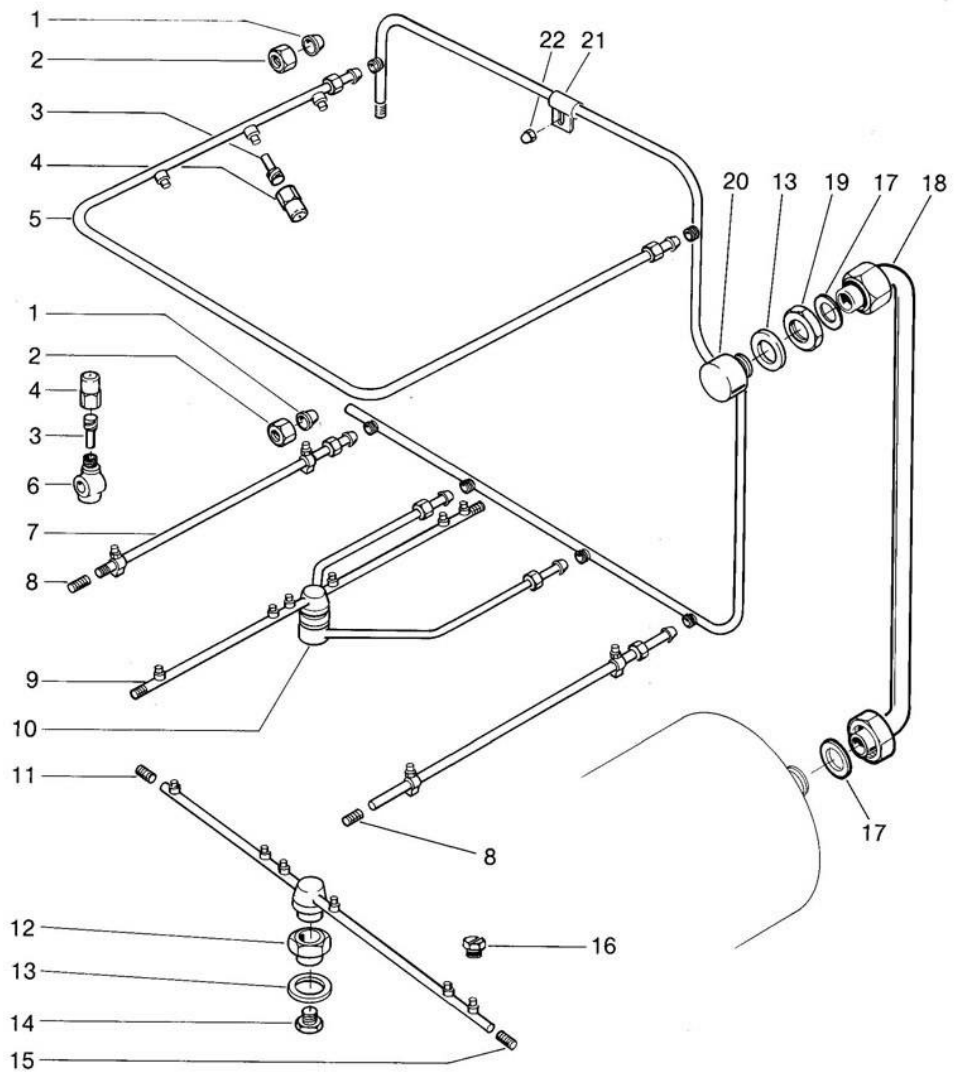
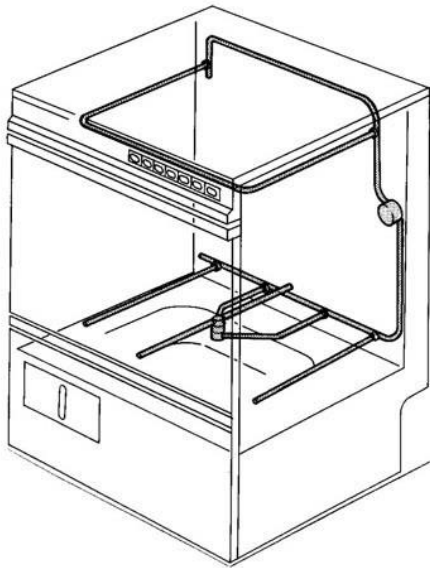


GS 12

Rinsing I

| Pos. | Designation | Part No. | Notes |
|------|--|-----------|---|
| 1 | Container cap | 60002216 | |
| 2 | Rinse aid container | 35 02 022 | |
| 3 | Container support | 35 01 541 | |
| 4 | Wire house clip | 28 02 348 | |
| 5 | Suction pipe | 55 25 063 | |
| 6 | Hose \varnothing 6 x 1,5 x 450 | 40 01 024 | per meter |
| 7 | Hexagon nut M 4 | 21 05 300 | self-securing |
| 8 | Wire house clip | 28 02 348 | |
| 9 | Dispenser ELT 10 GS left cpl. | 55 28 278 | |
| 10 | Dispenser support bracket | 60000314 | |
| 11 | Hexagon nut M 5 | 21 01 203 | |
| 12 | Hose \varnothing 5 x 1,5 x 335 | 40 01 024 | per meter |
| 13 | Hexagon bolt M 10 x 16 | 20 01 352 | |
| 14 | Seal \varnothing 18 x \varnothing 10 x 1,5 | 27 09 013 | |
| 15 | Boiler inlet elbow | 55 09 055 | with DVGW as from 1/88 bis 12/87 55 09 043 |
| 16 | Hose clip \varnothing 14 - \varnothing 24 | 28 02 108 | |
| 17 | Hose \varnothing 13 x 3,5 x 1015 | 40 02 029 | per meter |
| 18 | Hose \varnothing 13 x 3,5 x 1215 | 40 02 029 | per meter |
| 19 | Support plate cpl. | 55 04 046 | |
| 20 | Rinse inlet connection cpl. | 55 11 057 | |
| 21 | Seal \varnothing 24 x \varnothing 19,5 x 1,5 | 27 09 010 | |
| 22 | Shaped hose | 40 03 053 | |
| 23 | Connection 1/2" BSP x 14,5 | 55 31 007 | consist of Pos. 23, 24, 25 |
| 24 | Seal \varnothing 28 x 21 x 2,0 | 27 09 011 | |
| 25 | Water inlet 1/2" BSP | 55 31 007 | Consist of pos. 23, 24, 25 |
| 26 | Hexagon nut M 6 | 21 01 204 | |
| 27 | Backflow restrictor | 35 01 193 | |
| 28 | Boiler | 55 12 033 | |
| 29 | O-ring | 27 07 069 | |
| 30 | Heating element 5 kW 3 x 220/380 V | 31 03 030 | |
| 31 | Clamping plate | 01 17 003 | |
| 32 | Washer \varnothing 5,3 | 22 02 203 | |
| n.p. | Boiler elbow | 55 09 043 | Without DVGW until 12/87 |
| n.p. | Reinforced hose \varnothing 13 x 3,5 | 40 02 029 | for 55 09 043, per meter |
| | | | |
| | | | |

GS 12
Nachspülung II
Rinsing II
Rinçage II



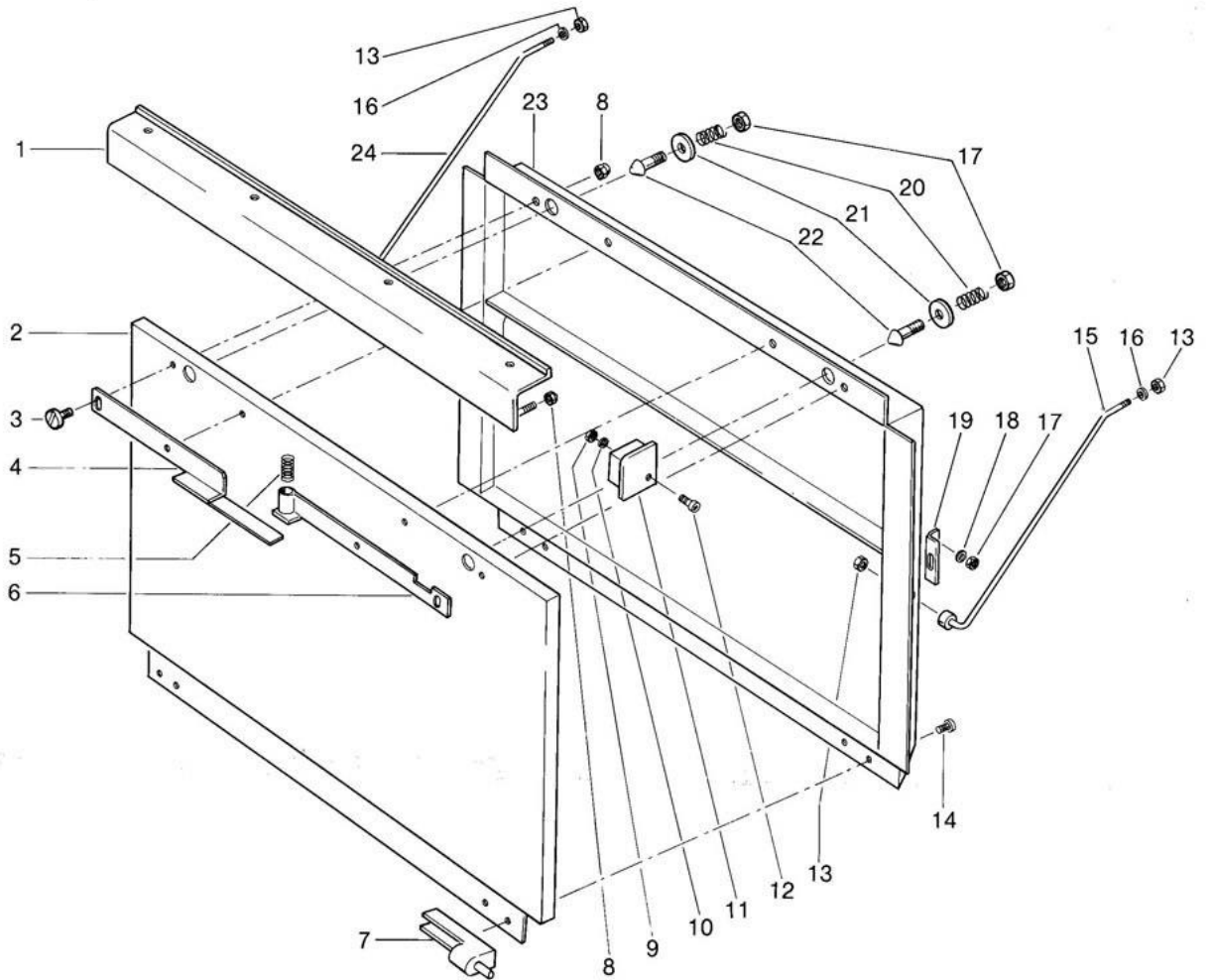
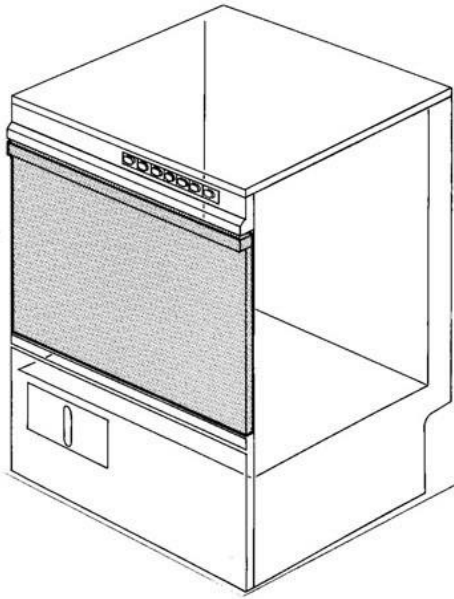
GS 12

Rinsing II

| Pos. | Designation | Part No. | Notes |
|------|--------------------------------|-----------|-----------------------|
| 1 | Olive ø 10 | 29 07 303 | |
| 2 | Coupling nut BSP 3/8" | 29 07 200 | |
| 3 | Spray jet swirl | 65002755 | |
| 4 | Spray jet cap | 65002754 | |
| 5 | Top rinse manifold cpl. | 55 10 075 | |
| 6 | Rinse jet base | 55 10 008 | |
| 7 | Bottom rinse arm cpl. | 55 10 076 | |
| 8 | Grub-screw M 9 x 40 | 20 30 502 | black |
| 9 | Revolving arm cpl. | 55 10 078 | |
| 10 | Revolving arm support | 55 10 077 | |
| 11 | Grub-screw M 9 x 0,75 x 6 lg. | 29 10 238 | |
| 12 | Revolving arm socket | 35 01 161 | |
| 13 | Seal ø 34 x ø 27 x 2,0 | 27 09 025 | |
| 14 | Revolving arm screw M 14 x 1 | 20 19 204 | |
| 15 | Grub-screw M 9 x 0,75 x 12 lg. | 29 10 234 | with O-ring 27 07 042 |
| 16 | Flat slotted rinse jet | 29 10 312 | |
| 17 | Seal ø 24 x ø 19,5 x 1,5 | 27 09 010 | |
| 18 | Rinse connection cpl. | 55 11 057 | |
| 19 | Locking nut BSP 3/4" | 61002626 | |
| 20 | Rinse manifold cpl. | 55 09 030 | |
| 21 | Pipe clip | 55 04 057 | |
| 22 | Dome head nut M 4 | 21 10 302 | |
| | | | |
| | | | |
| | | | |
| | | | |
| | | | |

GS 12

Türe
Door
Porte



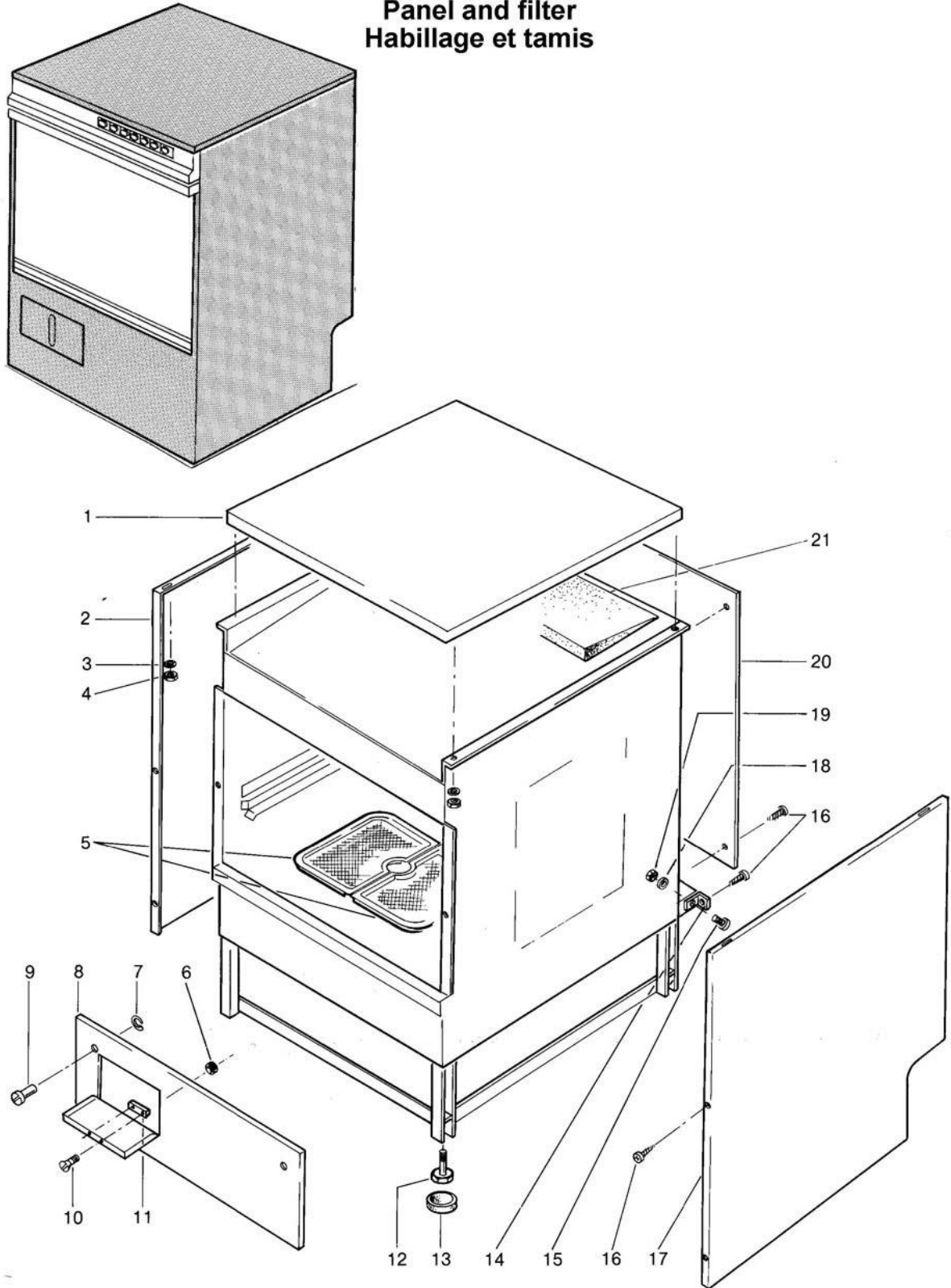
GS 12

Door

| Pos. | Designation | Part No. | Notes |
|------|---|-----------|--------------------------|
| 1 | Door handle | 55 15 101 | |
| 2 | Door outer panel | 55 15 098 | |
| 3 | Screw for door locking M 4 | 20 19 308 | |
| 4 | Locking angle left | 55 15 100 | |
| 5 | Pressure spring | 28 04 009 | |
| 6 | Locking angle right | 55 15 099 | |
| 7 | Door hinge | 35 01 151 | |
| 8 | Dome head nut M 4 | 21 10 302 | |
| 9 | Hexagon nut M 3 | 21 01 201 | |
| 10 | Seal M 3 | 22 08 501 | |
| 11 | End piece corner right | 35 01 170 | |
| n.p. | End piece corner left | 35 01 171 | |
| 12 | Lens head countersunk screw M 3x6 | 20 12 300 | |
| 13 | Hexagon nut M 6 | 21 05 304 | self-securing |
| 14 | Lens head countersunk screw M 4x12 | 20 12 314 | |
| 15 | Door stay right | 55 15 096 | |
| 16 | Seal M 6 | 22 08 504 | |
| 17 | Hexagon nut M 5 | 21 01 303 | |
| 18 | Washer \varnothing 5,3 | 22 02 203 | |
| 19 | Sliding piece | 35 01 172 | |
| 20 | Pressure spring | 28 04 013 | for pos. 22 |
| 21 | Washer \varnothing 5,2 x \varnothing 20 x 2 | 22 02 314 | after 6/89 |
| 22 | Door catch bolt | 20 19 303 | |
| 23 | Door base frame | 55 15 095 | |
| 24 | Door stay left | 55 15 097 | |
| n.p. | Door cpl. | 55 15 094 | |
| n.p. | Silicone profile seal 560 mm lg. | 62001618 | per metre, as from 11/93 |
| n.p. | Silicone glue | 34 03 012 | |
| | | | |
| | | | |
| | | | |
| | | | |
| | | | |

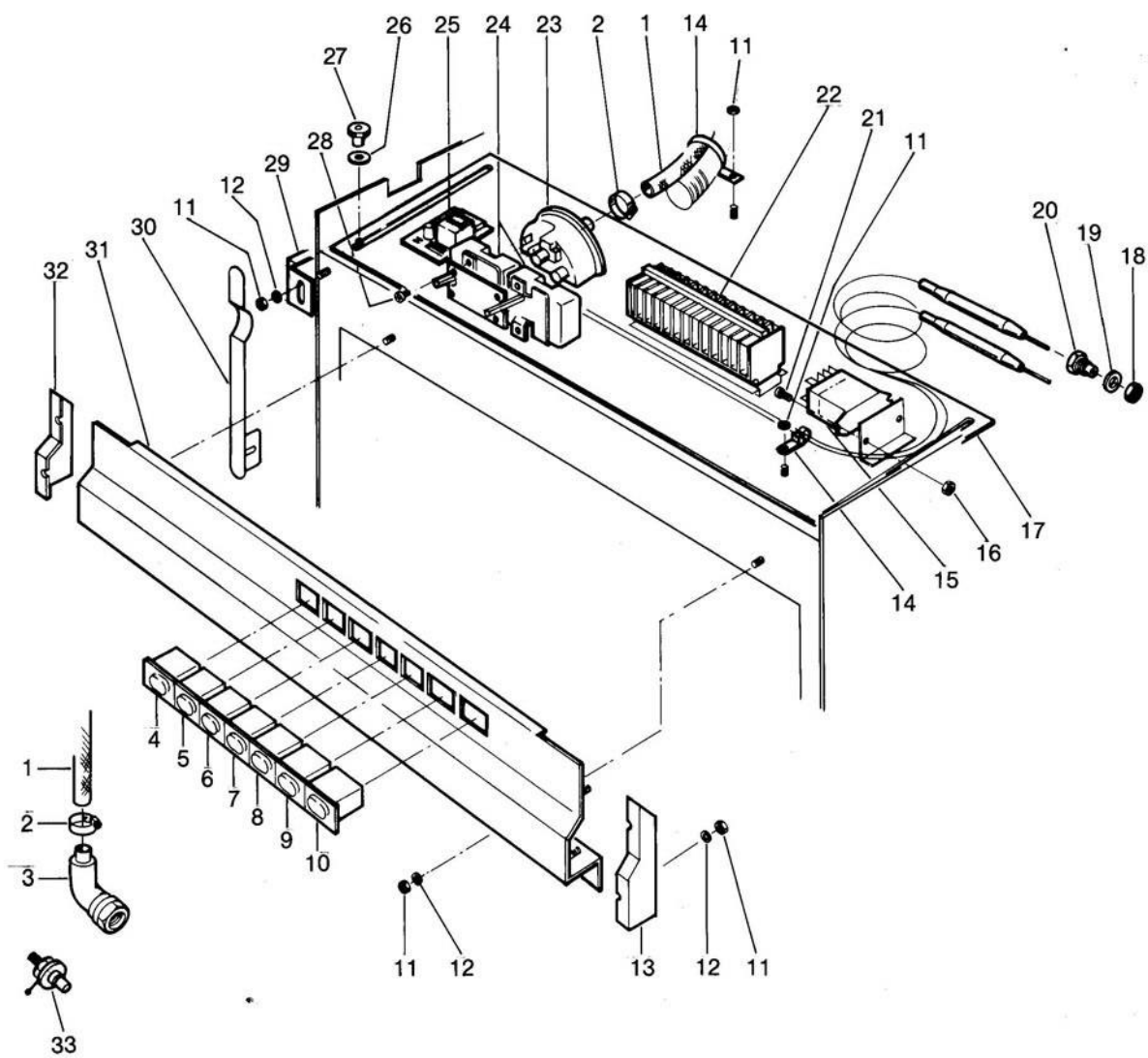
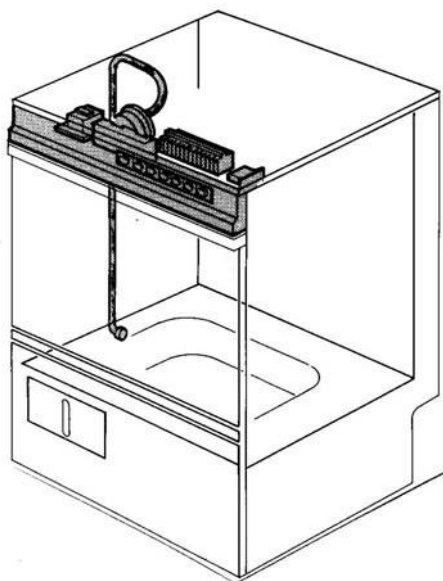
GS 12

Verkleidung und Sieb Panel and filter Habillage et tamis



GS 12

Elektroteile I Electrical parts I Matériel électrique I



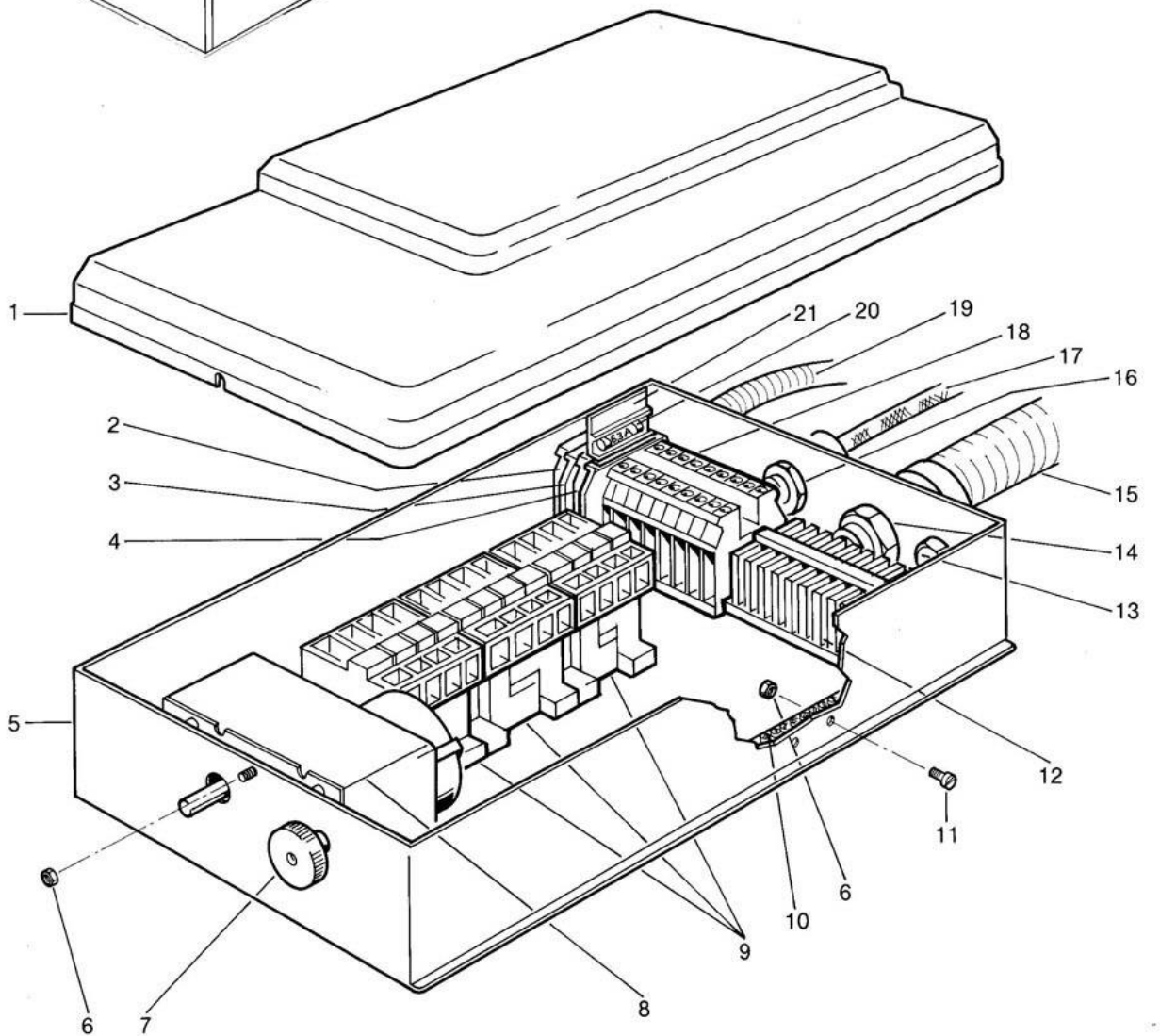
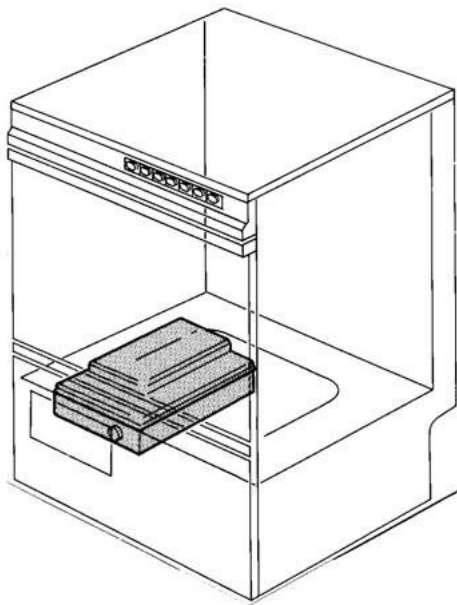
GS 12

Electrical parts I

| Pos. | Designation | Part No. | Notes | | |
|------|--|-----------|--|---------------|----------------|
| 1 | Hose \varnothing 5 x 3 x 1200 lg. | 40 01 024 | per metre | | |
| 2 | Wire house clip | 28 02 348 | | | |
| 3 | Air chamber cpl. | 55 04 030 | | | |
| 4 | Pressure switch green, oval | 31 24 185 | ON-OFF (blue edge) | From 03/89 | |
| 5 | Lamp white 220 V, oval | 31 08 116 | TEMPERATURE (blue edge) | | |
| 6 | Pressure key button white, oval | 31 24 153 | I-Min.-Programme (blue edge) | | |
| 7 | Pressure key button white, oval | 31 24 130 | II-Min.-Programme (blue edge) | | |
| 8 | Pressure switch white, oval | 31 24 128 | WASHING (blue edge) | | |
| 9 | Pressure key button white, oval | 31 24 129 | RINSING (blue edge) | | |
| 10 | Lamp white 12 V, oval | 60003670 | WACO (blue edge) | | |
| o.P. | Thermometer | 32 01 035 | | | Until 02/89 |
| o.P. | Thermometer | 32 01 036 | | | |
| o.P. | Pressure switch | 31 24 089 | ON-OFF quadratic | | |
| o.P. | Pressure switch white | 31 24 094 | 1 Min.Progr. (quadr.) | | |
| o.P. | Pressure switch white | 31 24 095 | 2 Min.Progr. (quadr.) | | |
| o.P. | Pressure switch white | 31 24 096 | WASHING man. (quadr.) | | |
| o.P. | Pressure switch white | 31 24 097 | RINSING man.(quadr.) | | |
| o.P. | Check indication | 31 24 098 | WAKO (quadr.) | | |
| o.P. | Bulb; 48V; 20MA | 31 08 034 | for quadratic switches | | |
| 11 | Hexagon nut M 4 | 21 05 202 | | | |
| 12 | Washer \varnothing 4,3 | 22 02 302 | | | |
| 13 | End piece right | 35 01 166 | | | |
| 14 | Cable clamp | 31 20 008 | | | |
| 15 | Mini-relay | 31 13 045 | | | |
| 16 | Hexagon nut M 3 | 21 01 301 | | | |
| 17 | Control panel cpl. | 60 001696 | without electrical parts,no more available | | |
| 18 | Locking nut M 14 x 1 | 31 25 002 | | | |
| 19 | Seal \varnothing 14,2 x \varnothing 20 x 2,0 | 27 09 036 | | | |
| 20 | Gland for thermostat | 31 25 001 | | | |
| 21 | Cylinder screw M 3 x 8 | 20 09 202 | | | |
| 22 | Terminal strip | 31 09 025 | 15 pieces | | |
| 23 | Level switch 100/60 | 31 26 020 | | | |
| 24 | Thermostat 1750 lg. | 31 25 013 | for tank and boiler | | |
| 25 | P-H printed circuit board WACO | 31 13 048 | | | |
| 26 | Washer \varnothing 5,2 x \varnothing 20 x 2 | 22 02 314 | | | |
| 27 | Knurled nut M 5 | 21 12 003 | | | |
| 28 | Pan head screw M 4 x 8 | 20 10 309 | | | |
| 29 | Limit switch cpl. | 55 19 007 | | | |
| 30 | Switch spring | 55 19 041 | as from 10/84 | | |
| 31 | Front control panel for rectangular switches | 55 03 133 | w.panel edges wo.switches,after 8/90 | | |
| n.p. | Type strip GS 12 | | 1 x 2803147 and 1 x 2803148 | | |
| 32 | End piece left | 35 01 167 | | | |
| 33 | Built-in electrode cpl. | 31 13 043 | for Waco | | |
| n.p. | Symbol plate for panel | 28 03 226 | | | |
| n.p. | Wire assortment - control panel | 60001724 | | | |
| n.p. | Wire assortment - limit switch | 31 23 063 | | | |
| n.p. | Terminal strip base frame | 31 09 002 | | | |

GS 12

Elektroteile II Electrical parts II Matériel électrique II



GS 12

Electrical parts II

| Pos. | Designation | Part No. | Notes |
|------|----------------------------------|-----------|-------------------------|
| 1 | Contacteur control box cover | 60001664 | |
| 2 | Earth terminal yellow/green | 31 09 064 | |
| 3 | Terminal block blue | 31 09 050 | |
| 4 | Fuse terminal | 31 09 063 | |
| 5 | Contacteur control box | 55 18 038 | |
| 6 | Hexagon nut M 4 | 21 01 302 | |
| 7 | Knurled nut M 6 | 21 12 004 | |
| 8 | Programme switch | 31 05 119 | |
| 9 | Contacteur | 31 04 161 | |
| 10 | Earth terminal block | 31 09 094 | |
| 11 | Pan head screw M 4 x 12 | 20 10 312 | |
| 12 | Terminal strip 13-fold | 55 19 070 | made of 31 09 025 |
| 13 | Blind plug PG 16 | 31 10 025 | |
| n.p. | Hexagon nut for PG 16 | 31 10 110 | |
| 14 | Cable gland PG 21 | 31 10 070 | |
| n.p. | Hexagon nut for PG 21 | 31 10 012 | |
| 15 | Wiring loom I | 31 23 064 | |
| 16 | Cable gland PG 11 | 31 10 044 | |
| n.p. | Hexagon nut for PG 11 | 31 10 045 | |
| 17 | Mains cable | 31 23 132 | |
| 18 | Terminal strip grey | 31 09 049 | |
| 19 | Wiring loom | 31 23 065 | relay box/control panel |
| 20 | Fuse 250 V 6,3 Amp. | 31 11 043 | |
| 21 | Fuse insert piece | 31 09 072 | |
| | Relay box contacteur control box | 31 23 060 | |
| | | | |
| | | | |
| | | | |
| | | | |